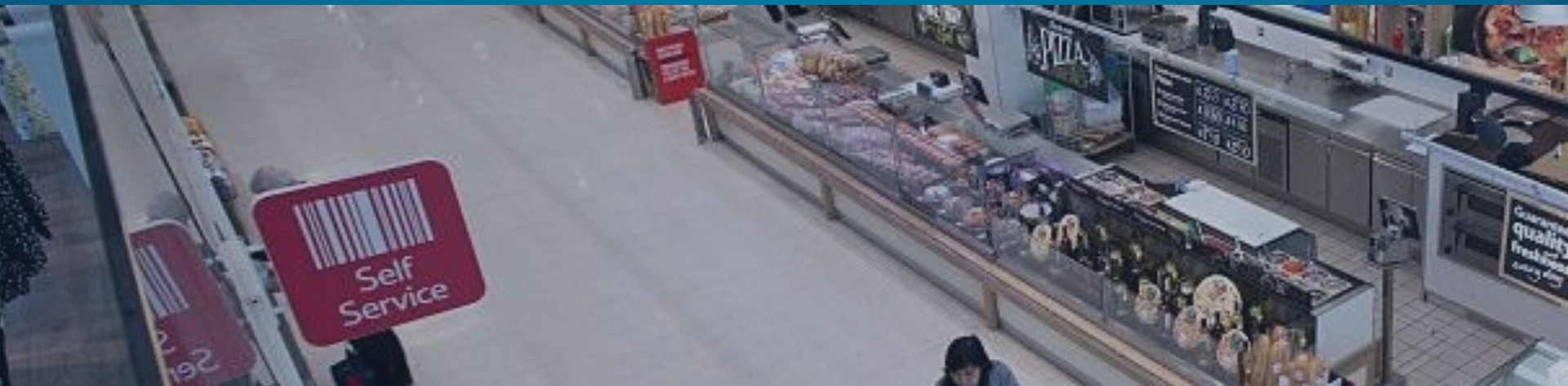




**CymbIoT**  
Making IoT Smarter



# Smart Asset Management

# About CymbloT

CymbloT for Smart Assets

Operational Scenario

Why CymbloT?

# The Problem

**Millions of dollars spent on IOT sensors & systems annually.**

**No interconnectivity of data & operations.**

**Integration projects demand high time & budget investments.**

**Insufficient ROI in IOT for Smart Asset Management for enterprises.**



# The CymbloT Solution



An **off-the-shelf IOT management product** that provides cities and enterprises with **rapid integration** of new & existing sensors and systems for **efficiency, security** – and **rapid ROI**.



# The CymbloT Offering



## Product, not Program

Market-available, off-the-shelf product with over 50 IoT use cases.



## Immediate ROI

Immediate ROI for cities and enterprises via integration of existing systems and sensors within 14 days



## Flexible

Flexible integration engine to support any sensor and system:

- 70+ formats supported
- Up to 14 days for deployment of new format



## Tested & Proven

Scalable & Robust architecture supporting any kind of deployment- Cloud & on premise.



# CymbloT C&C Core Features

## Maps

Operational GIS dynamic navigation maps.



## Scalability

Endless connectivity with standard COTS HW.



## BI Data Fusion

Real-time data & operational fusion of all systems.



## Advanced VMS

Internal VMS and 3rd party video support.



## Analytics

Video, Audio & Data Analytics turn data to triggers.



## Automation

Flexible process automation wizards.



## Architecture

Hybrid cloud and on premise deployments.



## Agnostic

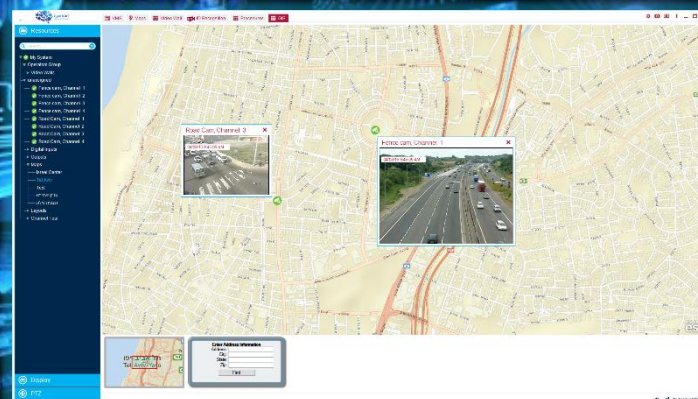
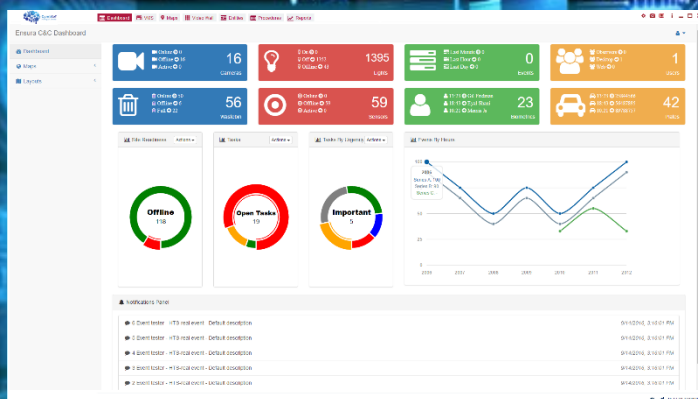
Integrate any 3rd party element.



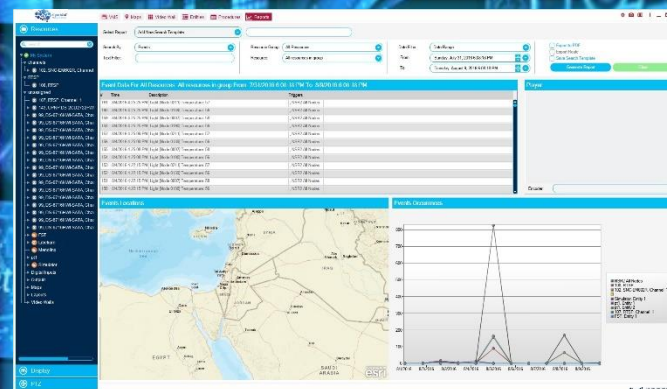
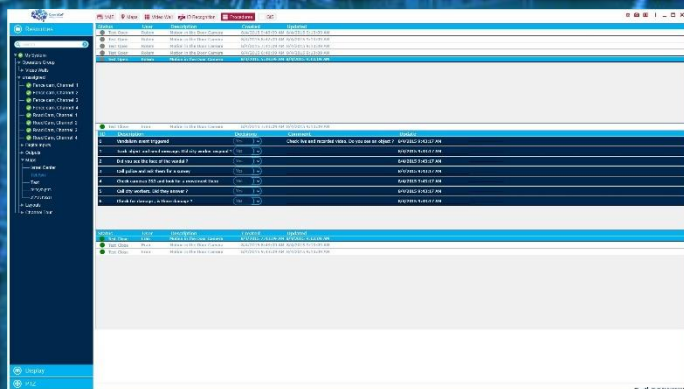
## Customization

On the fly UI design per need.





## A Unified Interface for all Security & IoT Systems

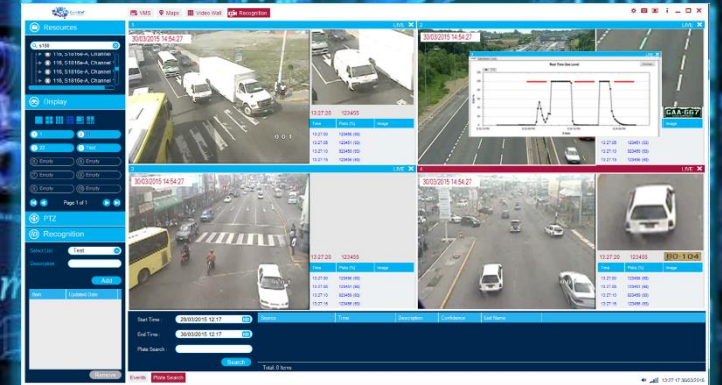
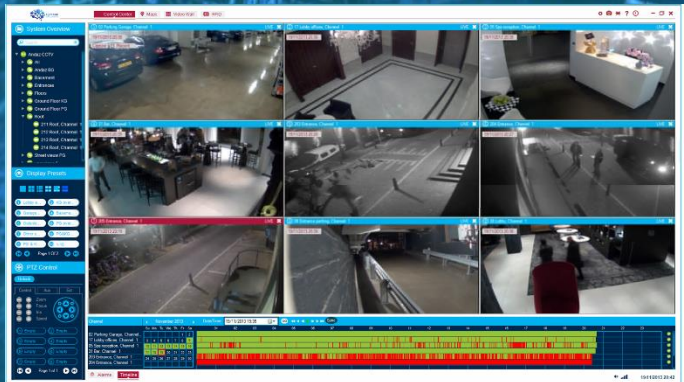


## Reporting & Task Management Module for Cross-system Queries





## Cloud-based & Onsite Deployments



## Support for Proprietary VMS & Internal Video Analytics



About CymbloT

## **CymbloT for Smart Assets**

Operational Scenario

Why CymbloT?

# External Deployment



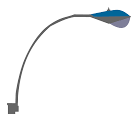
## Surveillance Camera

With analytics for Face Recognition, Abandoned Equipment, and more



## PA System

Delivers announcements, alerts, and notifications to patients & employees.



## Smart Lights

Turn off/on in response to programs, ambient light, or human presence.



## Audio Sensor

With analytics for identifying distress signals, violence, etc.



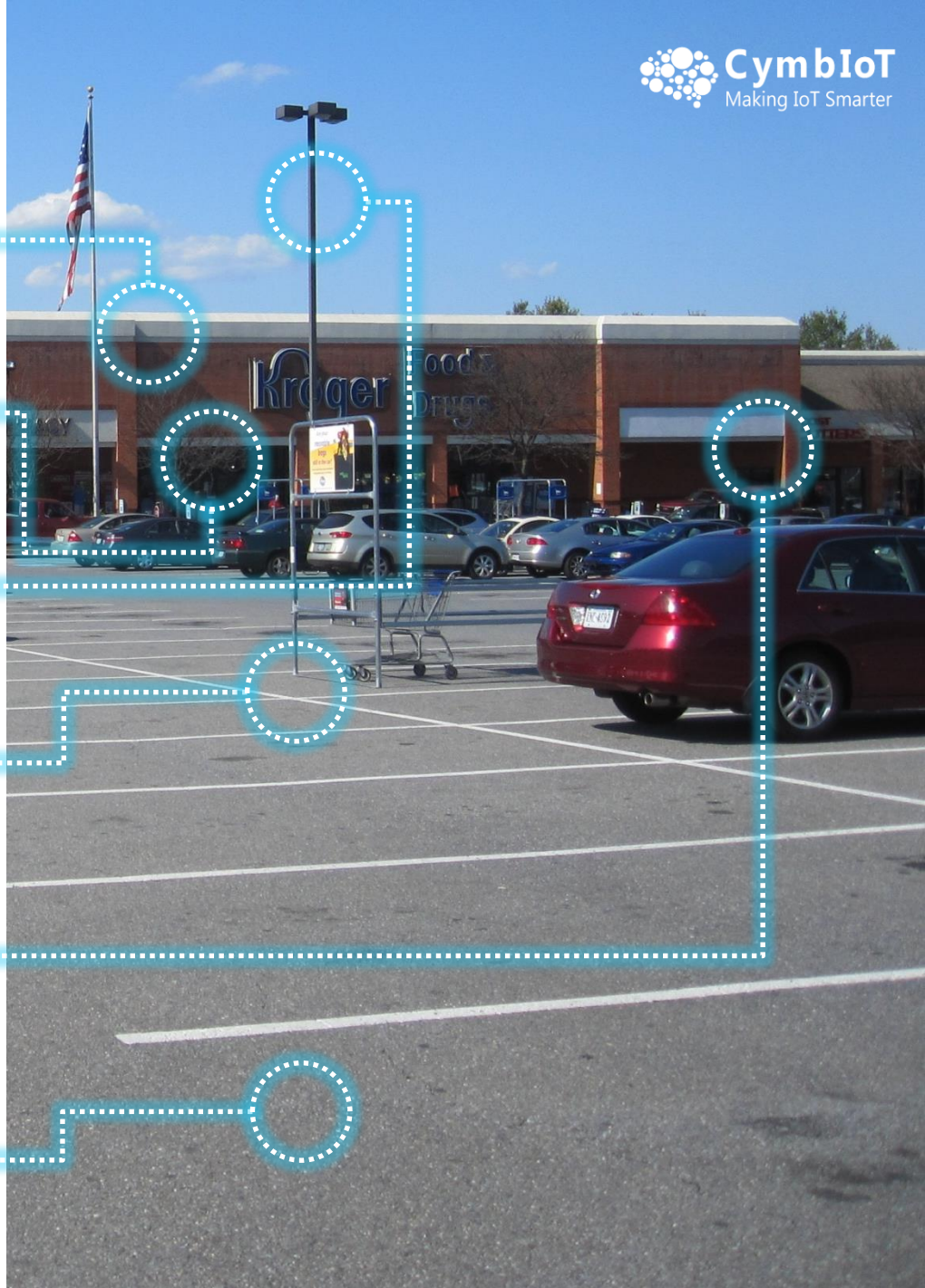
## Access Control

Automatic access control based on employee card, face recognition, etc.



## Parking Sensors

Identify free parking spaces.





# Internal Deployment



## Surveillance Camera

With analytics for identifying patients, employees, abnormal activities, etc.



## Smart Screens

Displaying ads, special offerings, announcements, etc.



## Smart Fire Response

Smoke alarms & countermeasures.



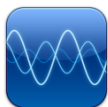
## Equipment RFID Tags

RFID tags on equipment to prevent loss and support tracking.



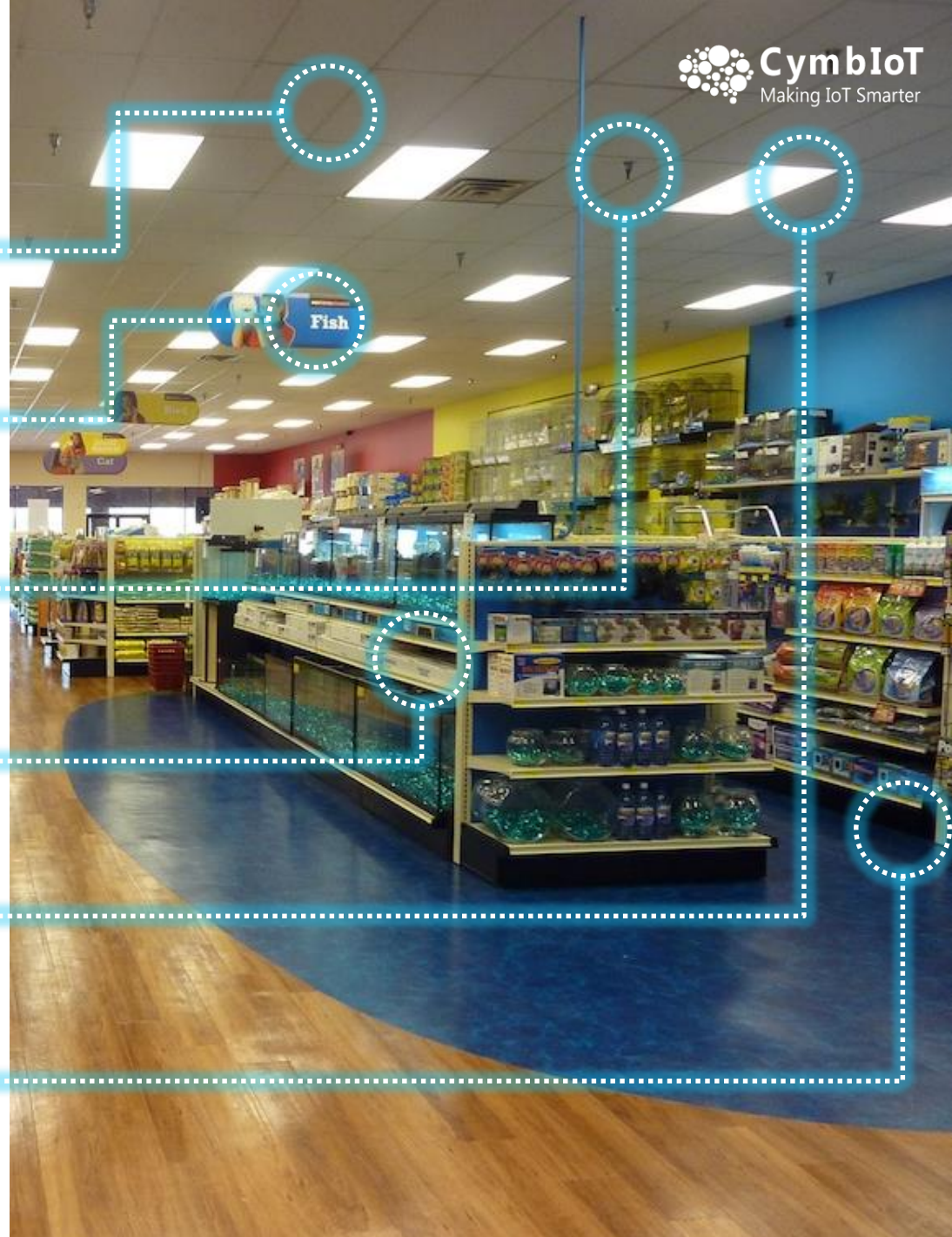
## Smart Lights

Turn off/on in response to programs, ambient light, or human presence



## Audio Sensors

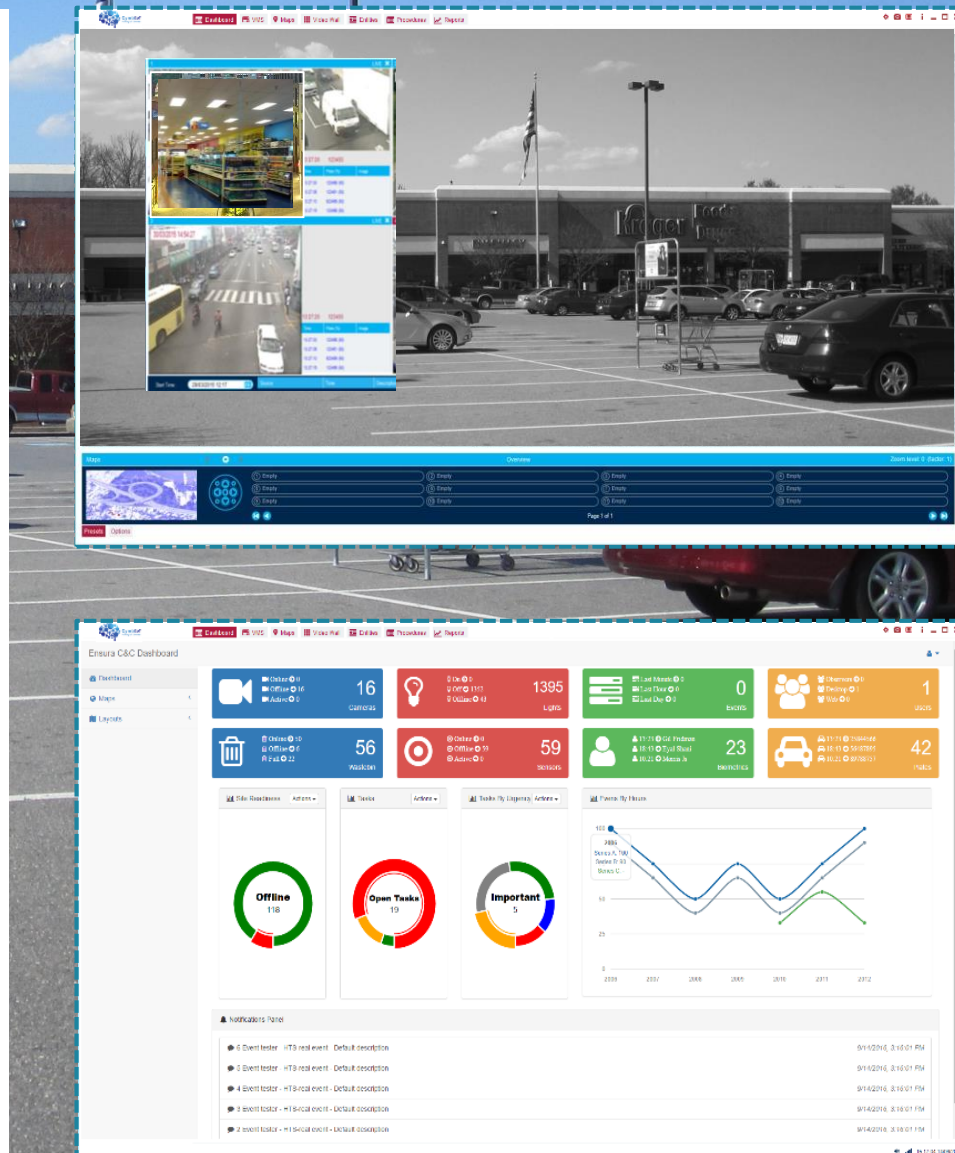
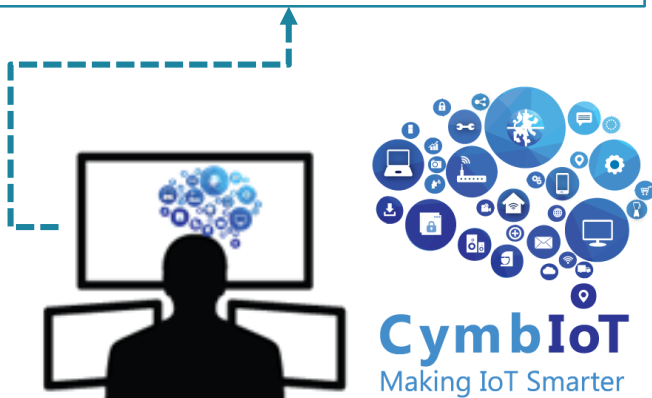
With analytics for identifying distress signals, violence, etc.



# Fusion with CymbIoT

**CymbIoT integrates all sensors and subsystems, correlating all types of data with operational triggers, and providing real-time status, analysis, and response capabilities to employees & managers:**

- ▶ Virtually limitless scalability & flexibility
- ▶ Powerful automatic process engine
- ▶ Permission-based GUI customization per user
- ▶ Operator Dashboard & Executive Dashboard
- ▶ Integration with any 3rd party sensor or system





About CymbIoT

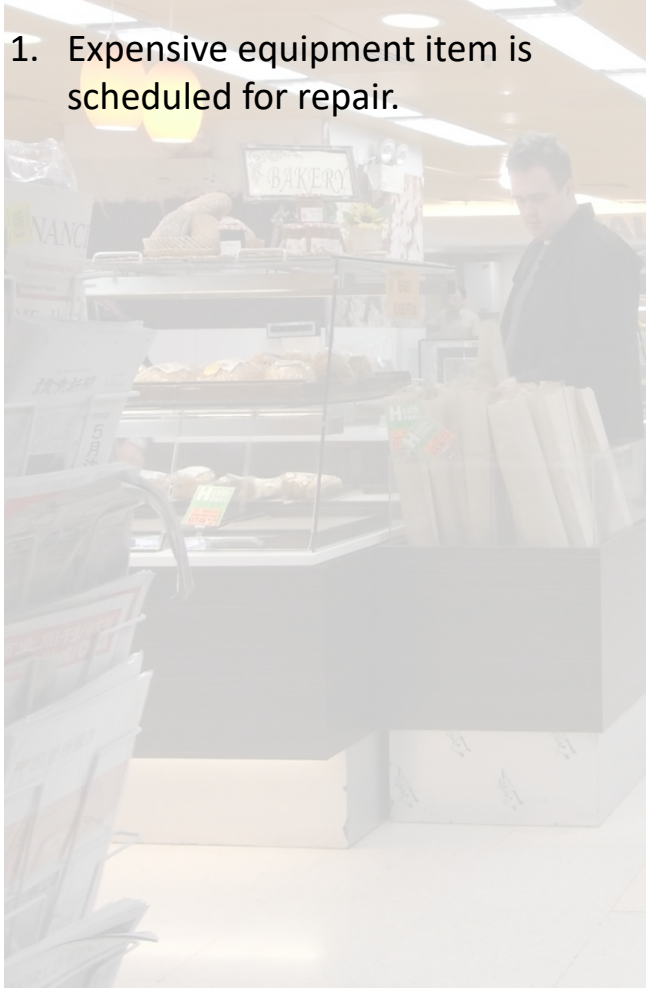
CymbIoT for Smart Assets

**Operational Scenario**

Why CymbIoT?

# Smart Assets Operational Scenario

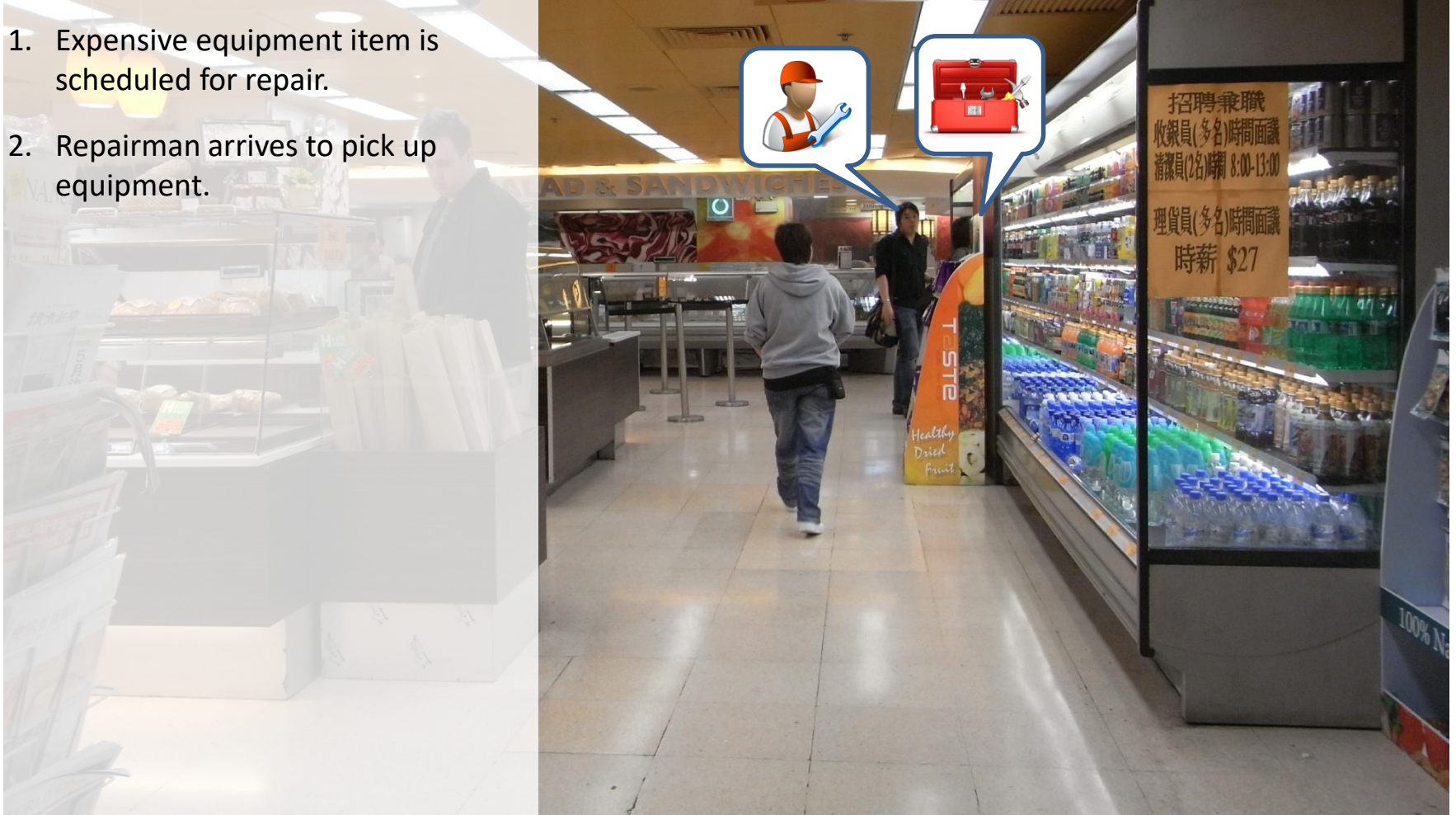
1. Expensive equipment item is scheduled for repair.





# Smart Assets Operational Scenario

1. Expensive equipment item is scheduled for repair.
2. Repairman arrives to pick up equipment.



# Smart Assets Operational Scenario

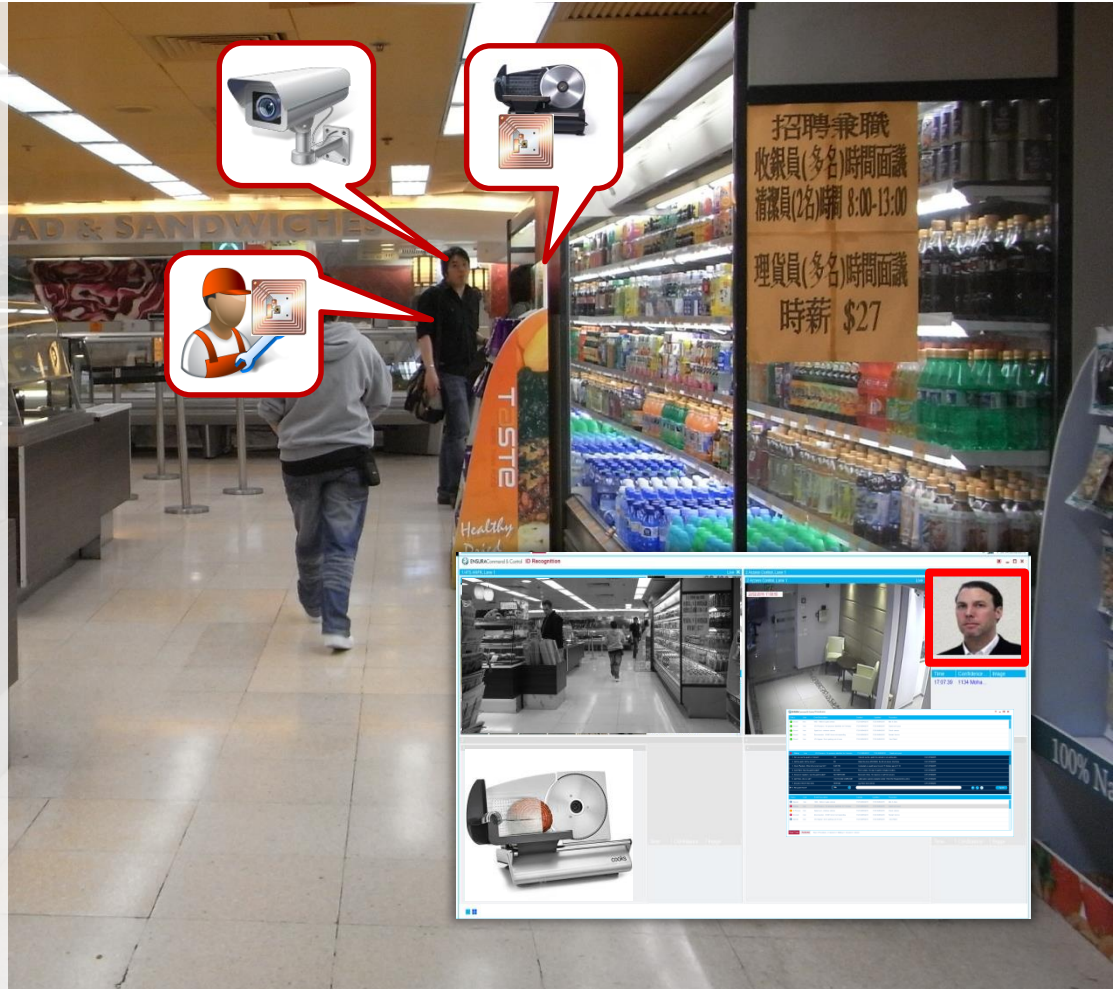
1. Expensive equipment item is scheduled for repair.
2. Repairman arrives to pick up equipment.
3. CymbloT sensors collect data:
  - Camera tracks repairman
  - Database identifies equipment for repair via RFID tag
  - Repairman is tracked via RFID tag.





# Smart Assets Operational Scenario

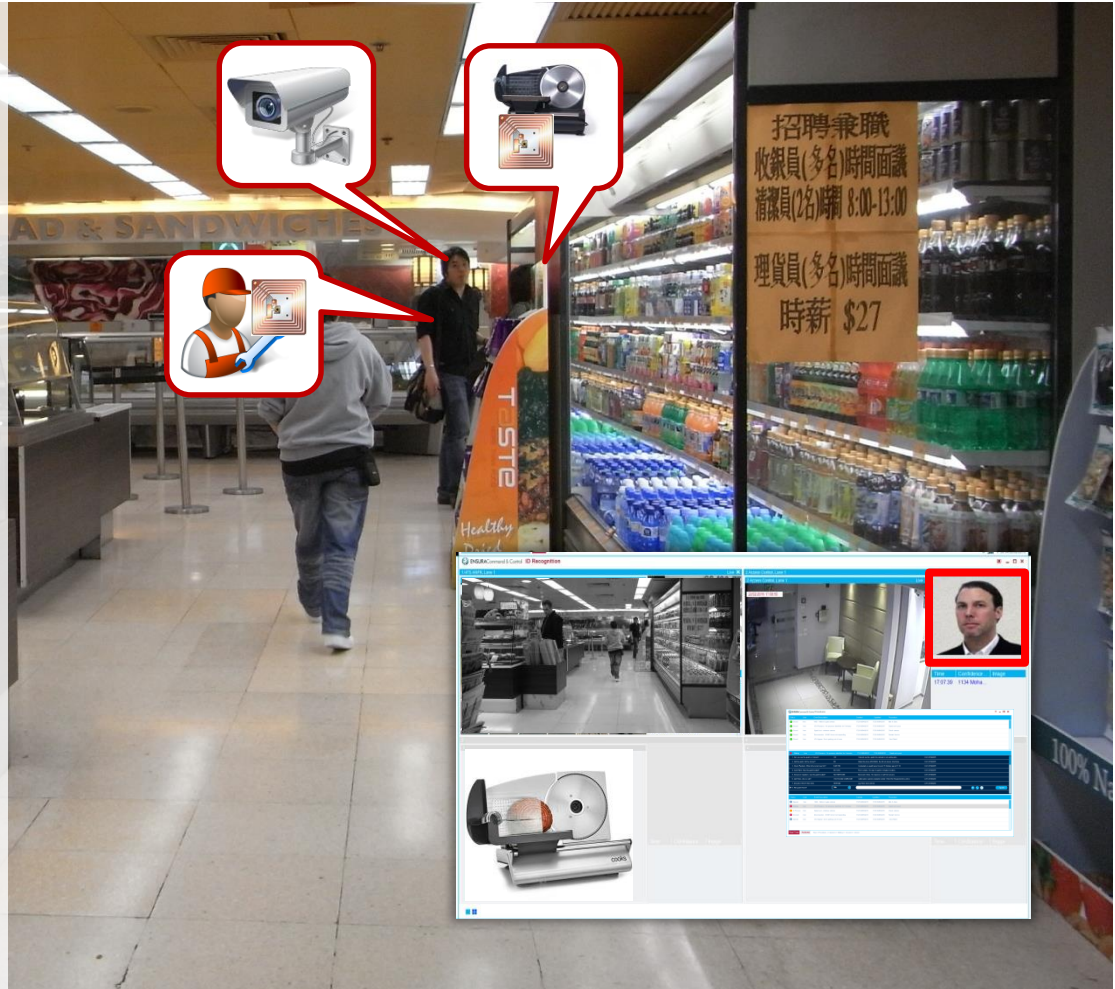
1. Expensive equipment item is scheduled for repair.
2. Repairman arrives to pick up equipment.
3. CymbloT sensors collect data:
  - Camera tracks repairman
  - Database identifies equipment for repair via RFID tag
  - Repairman is tracked via RFID tag.
4. CymbloT compares all data to ensure that an accredited repairman is picking up the correct piece of equipment.



# Smart Assets Operational Scenario

1. Expensive equipment item is scheduled for repair.
2. Repairman arrives to pick up equipment.
3. CymbloT sensors collect data:
  - Camera tracks repairman
  - Database identifies equipment for repair via RFID tag
  - Repairman is tracked via RFID tag.
4. CymbloT compares all data to ensure that an accredited repairman is picking up the correct piece of equipment.

**If data matches – doors open and system notes equipment as Off Premise – Repair.**



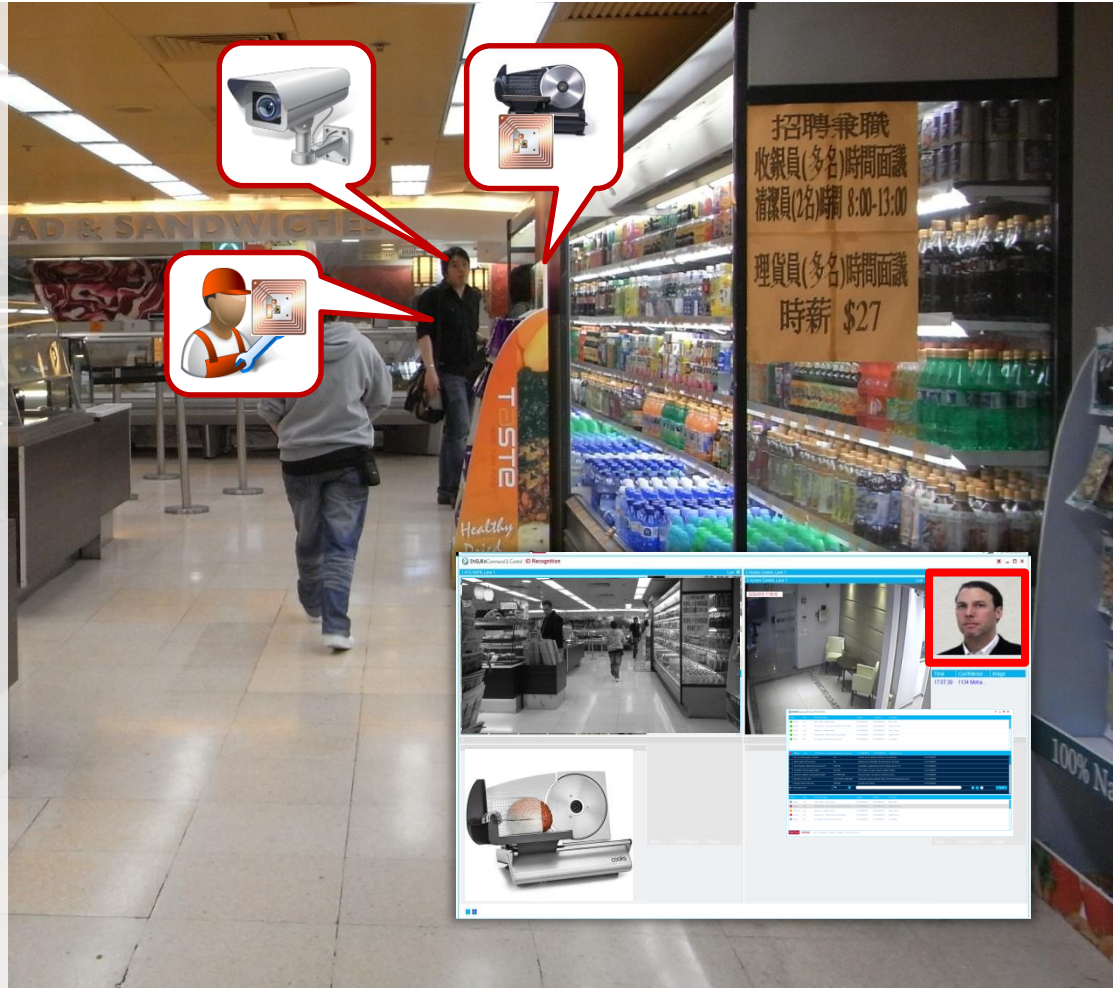


# Smart Assets Operational Scenario

1. Expensive equipment item is scheduled for repair.
2. Repairman arrives to pick up equipment.
3. CymbloT sensors collect data:
  - Camera tracks repairman
  - Database identifies equipment for repair via RFID tag
  - Repairman is tracked via RFID tag.
4. CymbloT compares all data to ensure that an accredited repairman is picking up the correct piece of equipment.

If data matches – doors open and system notes equipment as Off Premise – Repair.

If data does not match– doors lock and security is alerted.



About CymbloT

CymbloT for Smart Assets

Operational Scenario

**Why CymbloT?**



# ► Why Choose CymbIoT C&C?

A single Command & Control interface for all existing and new sensors, systems, and subsystems, providing:

Rapid, out-of-the box integration.



Immediate ROI from Day One



Interface between all data & systems.



UX for operational & executive levels.



**CymbIoT**  
Making IoT Smarter

# Some Global References...



## NETHERLANDS

Hyatt Hotel Chain  
Management & Security



## ISRAEL

4 Smart City Programs



## MEXICO

Federal Jail Management  
& Security



## JAMAICA

Kingston Safe City



## NEPAL

International Airport  
Management & Security



## NETHERLANDS

Private port Management  
& Security



## SINGAPORE

Safe Transit Program



## INDIA

Petrol Station  
Management & Security





**CymbIoT**  
Making IoT Smarter

## HEADQUARTERS

**Mail:** P.O.B 37, Azur 5819001  
ISRAEL

**Tel:** +972 (0)3-631-6881

## ROMANIA OFFICE

**Mail:** Hareju 29, 2nd District, Arh.  
Bucharest, ROMANIA

## ONLINE CONTACT

[www.cymbiot.com](http://www.cymbiot.com)

[info@cymbiot.com](mailto:info@cymbiot.com)